

# Jill Wolcott | knits

difficulty: moderate /  
ITR & flat,  
cables &  
eyelets

type of  
construction,  
techniques

This photo is to help the knitter see themselves using the finished product. Inside and online there are detail photos. [This is an example photo.]



The pattern description is written by a writer who is also a knitter and has read the pattern! [This is an example description.]

Creating an elegant garment can be almost effortless with the right pattern. The simple beauty of this polished sleeveless top springs from two variants of razor lace. The push and pull of yarn overs and double decreases create delicate peaks and valleys at the bottom trim. Worked flat in a single piece with a back seam and buttons at the back neck placket, you'll get all the pleasure of knitting lace with none of the stress of seaming it.

**sizes** Sizes by both alpha and size circumference.

Slouch Hat  
S (M) (L)  
Finished Hat Circumference 18 (20) (22)"

Pullover  
XS (S) (M) (L) (XL)  
Finished Body Circumference 35 (38) (41) (45.5) (49.5)"  
Pullover Finished Length 20.5 (21.25) (22) (22.5) (23)"

**gauge** Gauge in all patterns.

4 sts/in and 5.75 rows/in = 16 sts/4" and 23 rows/4" in Sweet Violet Flat and ITR on size 7(4.5mm) ndls  
7 sts/in and 6 rows/in = 28 sts/4" and 24 rows/4" in Triple Center Cable Flat and ITR on size 7(4.5mm) ndls

**needles**

Size 7(4.5mm) circular-ndl, 16" circular ndl (Hat), dpns, OR size to obtain gauge

**supplies** What you need other than needles and yarn!

Stitch markers, tapestry needle, stitch holders or WY, extra needles for 3-ndl BO

**yarn**

Kauri Worsted from Zealana, 60% Fine New Zealand Merino, 30% possum, 10% silk, 40g/94 yds/85m  
Slouch Hat 2 skeins  
Pullover 10 (11) (11) (12) (113) skeins

**as shown** Model size is knit to the pattern, not to fit a model. Color for those who need to know.

Model Size Medium  
Color Blue Pania

Where to find pattern specific information.

**techniques, stitch patterns & charts, schematics**

See page 10 for techniques specific to this pattern. See page 11 for stitch patterns and charts and page 12 for schematics. Visit [www.JillWolcottKnits.com](http://www.JillWolcottKnits.com) for explanations of other techniques used.

**General notes on**

**Notes**  
1. See how to read the pattern and Charts.

2. "Right and left of garment refers to as worn." 4. When working instructions in tables if no instruction is given for your size, work the last instruction given above. 5. When BO partial row, the stitch following the BO number is worked as part of the BO. 6. When working short rows, if rows of instructions are given as a single row, use only the first row number.

Photos offer a closer view of the stitch patterns and design. Additional photos may also be found online. [Example photos.]

This is a sample of how patterns are set out. The hat is done in written fashion (with stitch charts on later pages).

### BOTTOM TRIM

Using size 7(4.5mm) ndls and e-wrap cast on, CO15 sts.

Row 1 (RS): Knit

Even Rows: Purl

Row 3: Knit

Row 5: K1, 4/4 LC, k5

Row 7: K3, 4/4 C, k3

Row 9: K5, 4/4 LC, k1

Row 11: Knit

Work Rows 1 through 12 until piece measures 18 (20) (22)" or desired length from beg, ending with a WS row.

Notice how the rows are set out so that you can move a marker down the page to keep track of your place.

### JOIN

Graft open sts on ndl to CO end OR join sts to CO using 3-ndl BO with RS together.

### CROWN

Using size 7(4.5mm) 16" circular ndl or dpns, on long edge with extra stitch, PU91 (105) (119) sts picking up in the center of the edge st.

PM.

Rnd 1: \*K1, k2tog, YO, k4; rep from \*

Even Rnds: Knit

Rnd 3: \*K2tog, YO, k1, YO, SSK, k2; rep from \*

Rnd 5: \*K1, k2tog, YO, k4; rep from \*

Rnd 7: \*K5, k2tog, YO; rep from \*

Rnd 9: \*YO, SSK, k2, k2tog, YO, k1; rep from \*

Rnd 11: \*K5, k2tog, YO; rep from \*

Work Rnds 1 through 12 until piece measures 8" or desired length from PU, ending with an Odd Rnd.

Cut yarn.

Put sts on WY or stitch holders and steam block.

### JOIN CROWN

**Note:** 1) Join can be done from RS or WS. 2) Crown is worked in four segments.

#### First Crown Segment

Divide 22 (26) (30) sts evenly on 2 dpns.

With WS together join using flat 3-ndl BO working toward center of hat.

Cut yarn and pull tail through last st.

#### Second Crown Segment

Divide next 18 (24) (26) (30) sts evenly on 2 dpns.

Join as for **First Crown Segment** working toward center.

#### Third Crown Segment

Divide next 20 (22) (26) (30) sts evenly on 2 dpns.

Join as for **First Crown Segment** working toward center.

#### Fourth Crown Segment

Divide remaining 24 (26) (28) sts on 2 dpns, with an extra st on one ndl.

Join as for **First Crown Segment** working toward center.

The written instructions are representational of all Jill Wolcott Knits patterns. I have chosen language I believe is clear, although not always the same as that used by other publishers.

When only 1 st and extra st remain, move last st worked to empty left ndl and join with extra st in flat 3-ndl BO.

## FINISHING

Work in ends of **Crown Join**, using tails to close center.  
Work in other ends.

### directions: pullover

### BODY BOTTOM TRIM

These instructions show how tables are used to clearly set out knitting instructions.

Using size 7(4.5mm) ndls and e-wrap cast on PM and join without twisting.  
Knit 1 rnd.

| Rnd | Size | Left Front | Rep | Cable Panel | Right Front & Left Back | Rep | Cable Panel | Right Back | Rep |
|-----|------|------------|-----|-------------|-------------------------|-----|-------------|------------|-----|
| Dec | XS   | k2tog      | 35x | k14         | k2tog                   | 63x | k14         | k2tog      | 28x |
|     | S    |            | 39x |             |                         | 67x |             |            | 28x |
|     | M    |            | 38x |             |                         | 73x |             |            | 35x |
|     | L    |            | 46x |             |                         | 83x |             |            | 35x |
|     | XL   |            | 49x |             |                         | 91x |             |            | 42x |

154 (162) (174) (190) (210) sts

### BODY TO ARMHOLES

Work each Row of table below a total of 2 times to complete a round.

| Rnd  | Size | Beg                            | Sweet Violet               | Rep | Cable Panel    | Sweet Violet               | Rep |
|------|------|--------------------------------|----------------------------|-----|----------------|----------------------------|-----|
| 1    | XS   | K1, k2tog, YO, k4              | k1, k2tog, YO, k4          | 4x  | k14            | k1, k2tog, YO, k4          | 4x  |
|      | S    | K3, k2tog, YO, k6              |                            |     |                |                            |     |
|      | M    | K3                             |                            | 5x  |                |                            | 5x  |
|      | L    | K3, K1, k2tog, YO, k6          |                            |     |                |                            |     |
|      | XL   | K1, k2tog, YO, k4              |                            | 6x  |                |                            | 6x  |
| Even | ALL  |                                |                            |     | knit           |                            |     |
| 3    | XS   | K2tog, YO, k1, YO, SSK, k2     | k2tog, YO, k1, YO, SSK, k2 | 4x  | knit           | k2tog, YO, k1, YO, SSK, k2 | 4x  |
|      | S    | K2, k2tog, YO, k1, YO, SSK, k4 |                            |     |                |                            |     |
|      | M    | K3                             |                            | 5x  |                |                            | 5x  |
|      | L    | K2, k2tog, YO, k1, YO, SSK, k4 |                            |     |                |                            |     |
|      | XL   | K2tog, YO, k1, YO, SSK, k2     |                            | 6x  |                |                            | 6x  |
| 5    | XS   | K1, k2tog, YO, k4              | K1, k2tog, YO, k4          | 4x  | k1, 4/4 LC, k5 | k1, k2tog, YO, k4          | 4x  |
|      | S    | K3, k2tog, YO, k6              |                            |     |                |                            |     |
|      | M    | K3                             |                            | 5x  |                |                            | 5x  |
|      | L    | K3, K1, k2tog, YO, k6          |                            |     |                |                            |     |
|      | XL   | K1, k2tog, YO, k4              |                            | 6x  |                |                            | 6x  |

These are techniques specific to the pattern put here for ready access. If they are not already in the online database the techniques are added when the pattern is published

**techniques**

**4/4 LC**

Put 4 sts on cn and hold in front. K4 then k4 from cn.

**cabling without a needle**

Skipping the first four stitches on the left needle, put the right needle into the back of the next 4 sts. Slide the first four stitches off the left needle to the front while sliding the other 4 stitches off the left needle and onto the right. With the left needle in front of the right, put the left needle into the four stitches slid off to the front then return the 4 stitches from the right needle back to the left needle. The stitches have now been crossed. Knit 8 sts.

**knit, picking up wraps**

Knit to a wrapped stitch on the left needle. Pick up wrap from the RS by putting right needle underneath the wrap on the RS and lifting the wrap onto the left needle, then knitting the wrap together with the stitch which it wrapped.

**purl, picking up wraps**

Purl to a wrapped stitch on the left needle. Pick up wrap from the RS by putting right needle underneath the wrap on the RS and lifting the wrap onto the left needle, then purling the wrap together with the stitch which it wrapped.

**Jill Wolcott Knits Standard Abbreviations & Techniques**

|                     |                   |               |                    |
|---------------------|-------------------|---------------|--------------------|
| *                   | begin repeat from | p             | purl               |
| %                   | percent           | p2tog+        | purl 2 together    |
| 3-ndl BO+           |                   | PM            | place marker       |
| beg                 | beginning         | PU+           | pick up            |
| BO+                 | bind off          | rep           | repeat             |
| cn                  | cable needle      | RS            | right side         |
| CO                  | cast on           | sl+           | slip               |
| dec(s)              | decrease(s)       | SSK+          | slip, slip, knit   |
| double-ndl cast on+ |                   | steam block+  |                    |
| g                   | gram(s)           | st(s)         | stitch(es)         |
| in/”                | inch(es)          | St st         | stockinette stitch |
| incL+               | increase-left     | s-w-s+        | slip-wrap-slip     |
| incR+               | increase-right    | wet block+    |                    |
| inc(s)              | increase(s)       | work in ends+ |                    |
| ITR                 | in-the-round      | WS            | wrong side         |
| join yarn+          |                   | WY            | waste yarn         |
| k                   | knit              | YO+           | yarn over          |
| k2tog+              | knit 2 together   | yd(s)         | yard(s)            |
| mm                  | millimeter        | x             | times              |
| ndl(s)              | needle(s)         |               |                    |

This is a list of abbreviations and techniques used in the pattern. Techniques followed by a "+" are part of the online database and aren't set out in the pattern. The list changes to reflect each pattern. In some instances I have chosen to use slightly different abbreviations (mostly capitalization) for visual clarity.

This pattern is for personal use by the purchaser and may not be used to make items for sale except with explicit written permission.



Jill Wolcott Knits recognizes the need for being environmentally responsible. Please join us in our efforts to be more sustainable by printing on recycled paper.

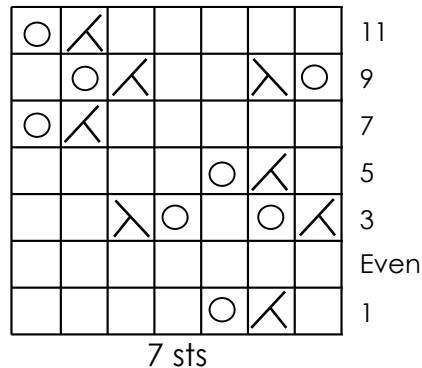
+ Please visit [www.JillWolcottKnits.com](http://www.JillWolcottKnits.com) for explanations of our standard abbreviations & techniques

STITCH PATTERNS & CHARTS

Both written and charted stitch patterns are provided here for swatching and clarity even if they are set out elsewhere in the pattern.

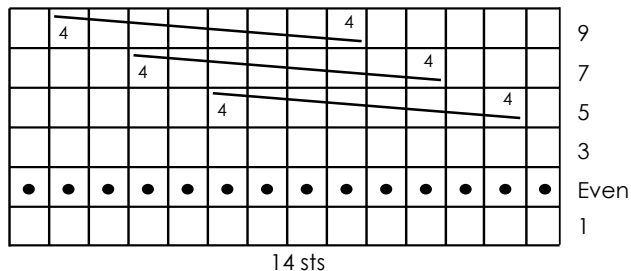
Sweet Violet ITR

Multiple of 7 sts  
 Rnd 1: \*K1, k2tog, YO, k4; rep from \*  
 Even Rnds: Knit  
 Rnd 3: \*K2tog, YO, k1, YO, SSK, k2; rep from \*  
 Rnd 5: \*K1, k2tog, YO, k4; rep from \*  
 Rnd 7: \*K5, k2tog, YO; rep from \*  
 Rnd 9: \*YO, SSK, k2, k2tog, YO, k1; rep from \*  
 Rnd 11: \*K5, k2tog, YO; rep from \*  
 Rep Rnds 1 through 12.



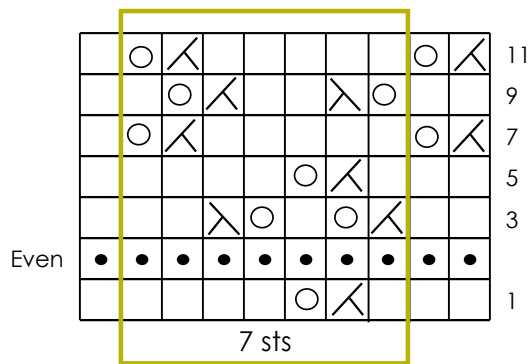
Triple Center Cable ITR

14 sts  
 Rnd 1: Knit  
 Even Rnds: Knit  
 Rnd 3: Knit  
 Rnd 5: K1, 4/4 LC  
 Rnd 7: K3, 4/4 LC  
 Rnd 9: K5, 4/4 LC  
 Rnd 11: Knit  
 Rep Rnds 1 through 12.



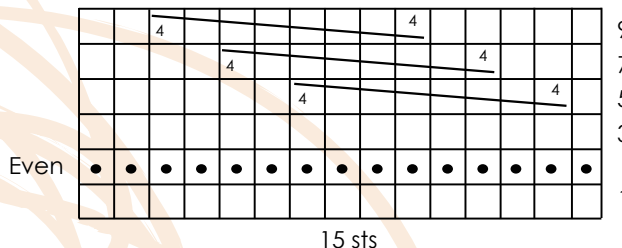
Sweet Violet Flat

Multiple of 7 sts + 3  
 Row 1(RS): K2, \*K1, k2tog, YO, k5; rep from \*  
 Even Row: Purl  
 Row 3: K2, \*k2tog, YO, k1, YO, SSK, k2; rep from \* to last st, end k1  
 Row 5: K2, \*k1, k2tog, YO, k5; rep from \*, end k1  
 Row 7: K2tog, YO, \*k5, k2tog, YO, k1; rep from \* to last st, end k1  
 Row 9: K2, \*YO, SSK, k2, k2tog, YO, k1; rep from \* to last st, end k1  
 Row 11: K2tog, YO, \*k5, k2tog, YO; rep from \* to last st, end k1  
 Rep Rows 1 through 12.



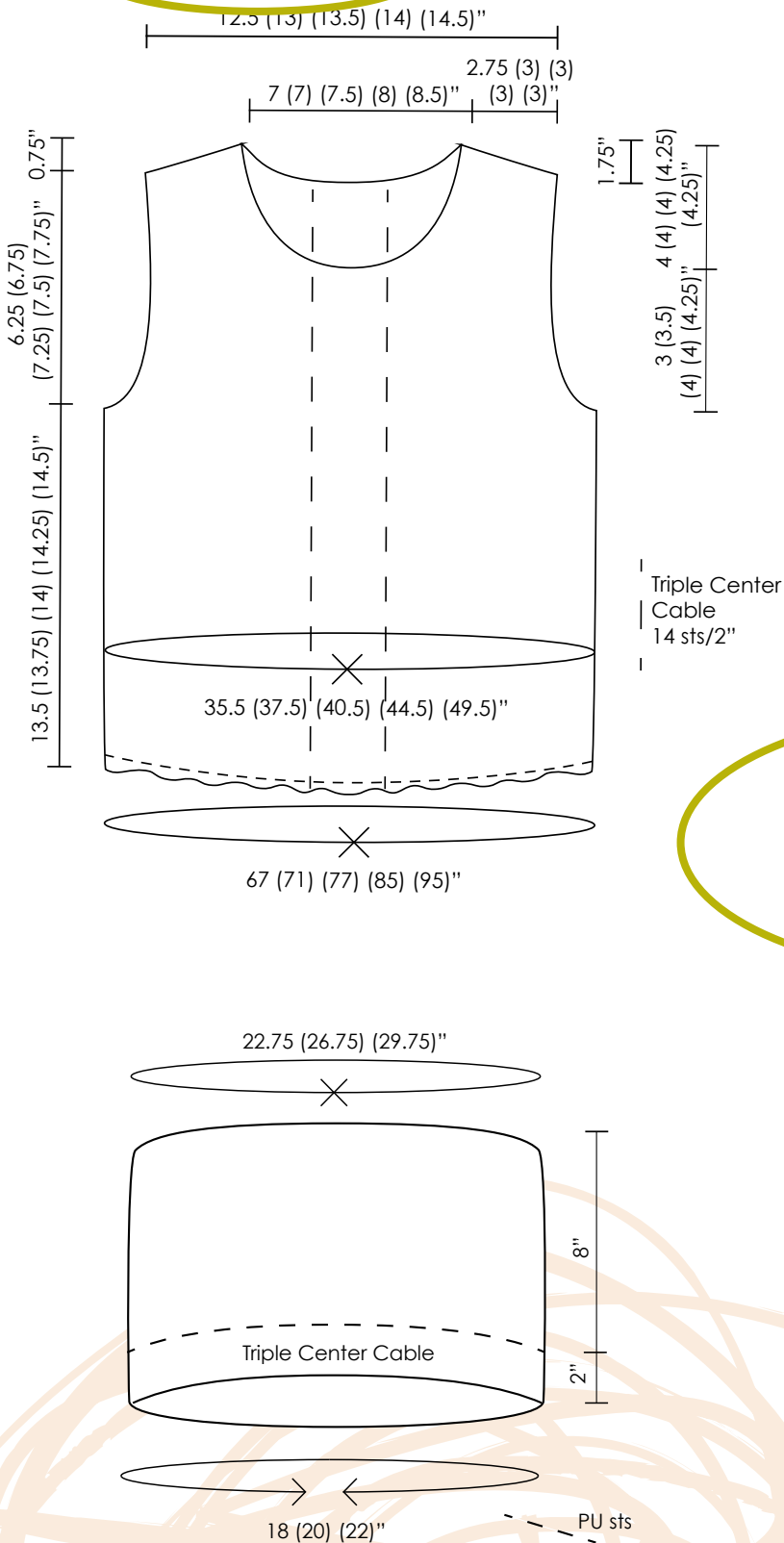
Triple Center Cable Flat

15 sts  
 Row 1 (RS): Knit  
 Even Rows: Purl  
 Row 3: Knit  
 Row 5: K1, 4/4 LC, k6  
 Row 7: K3, 4/4 LC, k4  
 Row 9: K5, 4/4 LC, k1  
 Row 11: Knit  
 Rep Rows 1 through 12.



**SCHEMATICS**

Schematics with measurements are always included!



Measurement Lines/ellipse indicate in-the-round or flat knitting. Measurements here are given for "as knit", so a flat piece may be slightly larger than the seamed piece.

