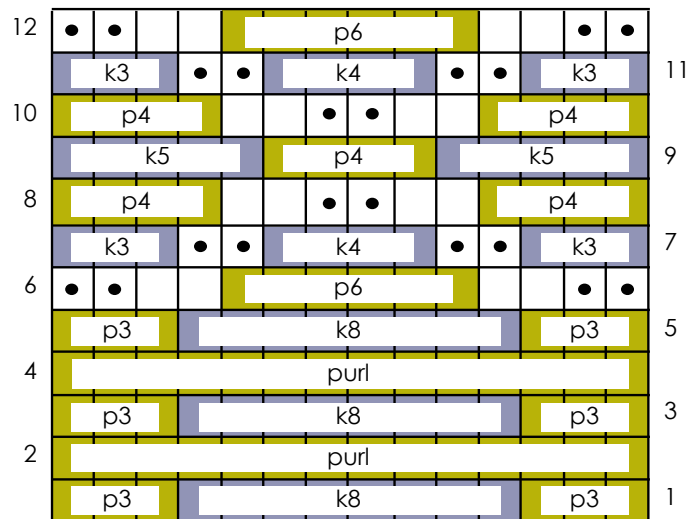


stitch pattern **GARTER BROCADE**

Garter Brocade  
Multiple of 14 sts

- Row 1 (RS): \*P3, k8, p3; rep from \*
  - Row 2: Purl
  - Row 3: \*P3, k8, p3; rep from \*
  - Row 4: Purl
  - Row 5: \*P3, k8, p3; rep from \*
  - Row 6: \*P2, k2, p6, p2, k2; rep from \*
  - Row 7: \*K3, p2, k4, p2, k3; rep from \*
  - Row 8: \*P4, k2, p2, k2, p4; rep from \*
  - Row 9: \*K5, p4, k5; rep from \*
  - Row 10: \*P4, k2, p2, k2, p4; rep from \*
  - Row 11: \*K3, p2, k4, p2, k3; rep from \*
  - Row 12: \*P2, k2, p6, p2, k2; rep from \*
- Repeat Rows 1 through 12.

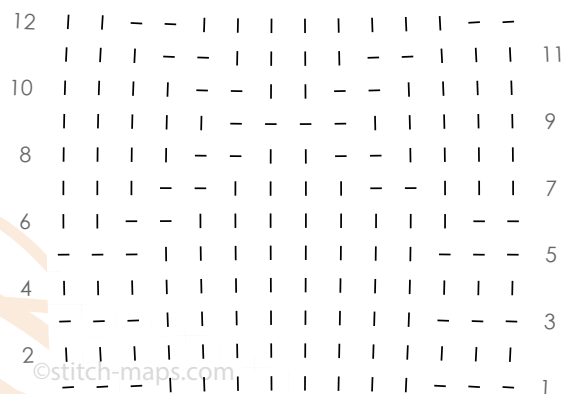
Garter Brocade - Flat



Key

- #   knit (specified number)
- #  purl (specified number)

Garter Brocade - Flat



- | Knit on RS, purl on WS
- Purl on RS, knit on WS