

Jill Wolcott | knits®

Level of knitting difficulty

Type of knitting

Major techniques

moderate /
flat / picked
up stitches,
grafting

This pattern is only
available through

Yarn

Description of the
piece, stitches,
techniques, other
benefits

A lovely way to explore
the beauty of knit and purl
combinations while making
yourself an easy-to-wear shawl
perfect for spring and summer.

Work the Drape in seeded
chevron; the movement of the
stitches adds intrigue and allows
the hand-painted yarn to work to
its best effect. Move on to 2x2
rib along one of the long edges
of the Drape to get a perfect
"collar" which can be left flat or
rolled into an easygoing rolled
neckline and front. The front
bands put the perfect polish on
this piece. Use the video link to
learn [backwards knitting](#) to make
these details take less effort.

Internal link

Savoie Shawl is made from one
[Squishy](#) by [Lula Luxury Fibers](#).
It is lightweight and just
open enough to wear wherever
you are going.

External link



Designed by Jill Wolcott

SAVOIE SHAWL

Share your projects using the hashtags #JillWolcottKnits and #JWKsavoieshawl - I love seeing what you're working on.
And be sure to sign up for the JWK Newsletter to stay in the loop about new patterns, classes, workshops, and more.

Sign up at: www.jillwolcottknits.com/subscribe

Information, and linked resources, along with general pattern notes on charts and written instructions.

information you can use

- All charts unless specified are **Action Charts**: do what you see. A knit is always a knit and a purl is always a purl.
- Road Map & Schematic drawings show "as knit" measurements, knitting technique placement, and knitting direction. "As knit" includes selvedge stitches for seaming or picking up stitches so the final measurements may be slightly different than measurements before seaming.
- See [page 3](#) for road map & schematic. See [pages 4](#) and [5](#) for techniques specific to this pattern. See [pages 6](#) and [7](#) for Stitch Patterns & Charts. Right and left refer to "as worn".
- Techniques and Abbreviations not given on the following page can be found online at www.JillWolcottKnits.com/techniques and www.JillWolcottKnits.com/abbreviations.
- A blank row on instructions in tables means to follow the instruction for the size above, with the number of repeats given for the size being worked.
- When an instructions says to work "a total of", that includes the initial time the instruction was worked.
- When binding off within a round or row, the stitch following the BO number given is worked as part of the bind off, but included in the stitches following the bind off.

Basic size information

size one size Add row repeats to make a larger Drape, and increase the number of pick ups for the rib proportionately
 Finished length at bottom 45" / 114.4 cm; finished length of rib 27.75" / 70.5 cm
 Finished depth 13.625" / 34.6 cm

gauge For stitch patterns to use in making a swatch, see **Stitch Patterns** on pages 6 and 7. There is a slight variation in the blocked stitch gauge depending on where it is measured.

Stitch	Needle	sts to 1" or 2.54 cm	rows to 1" or 2.54 cm	sts to 4" or 10 cm	rows to 4" or 10 cm
Blocked Seeded	US size 8[5mm]	5.5	7	22	28
Blocked Seeded Chevron	US size 8[5mm]	4.5	6	18	24
Unblocked 2x2 Rib	US size 3[3.25mm]	7	10	28	40
Blocked 2x2 Rib	US size 3[3.25mm]	8.5	9.125	34	36.5

Pattern gauge

needles & supplies

US size 8[5mm] needles and US size 3[3.25mm] circular needles OR size to obtain gauge; optional two US size 3[3.25mm] dops for front bands
 Stitch markers, locking pin markers, tapestry needle

yarn

Squishy from [Anzula Luxury Fibers](#), 80% superwash merino wool, 10% nylon, 385 yds [352m]. WPI 18
 1 skein

model color show

Calypso



Needles, supplies, yarn, color, model. Detail photo

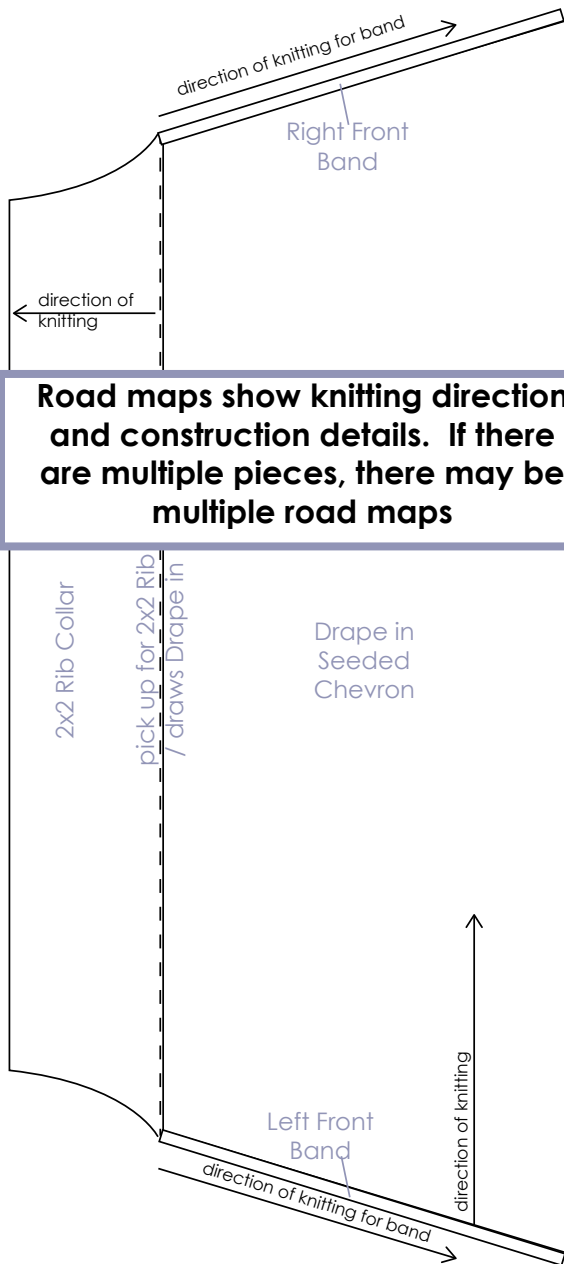
Total number of pages and current page are given. These patterns can be lengthy due to the amount of information provided, but they are easy to navigate electronically or in hard copy.
 In case of updates, the version number will change.

Version number

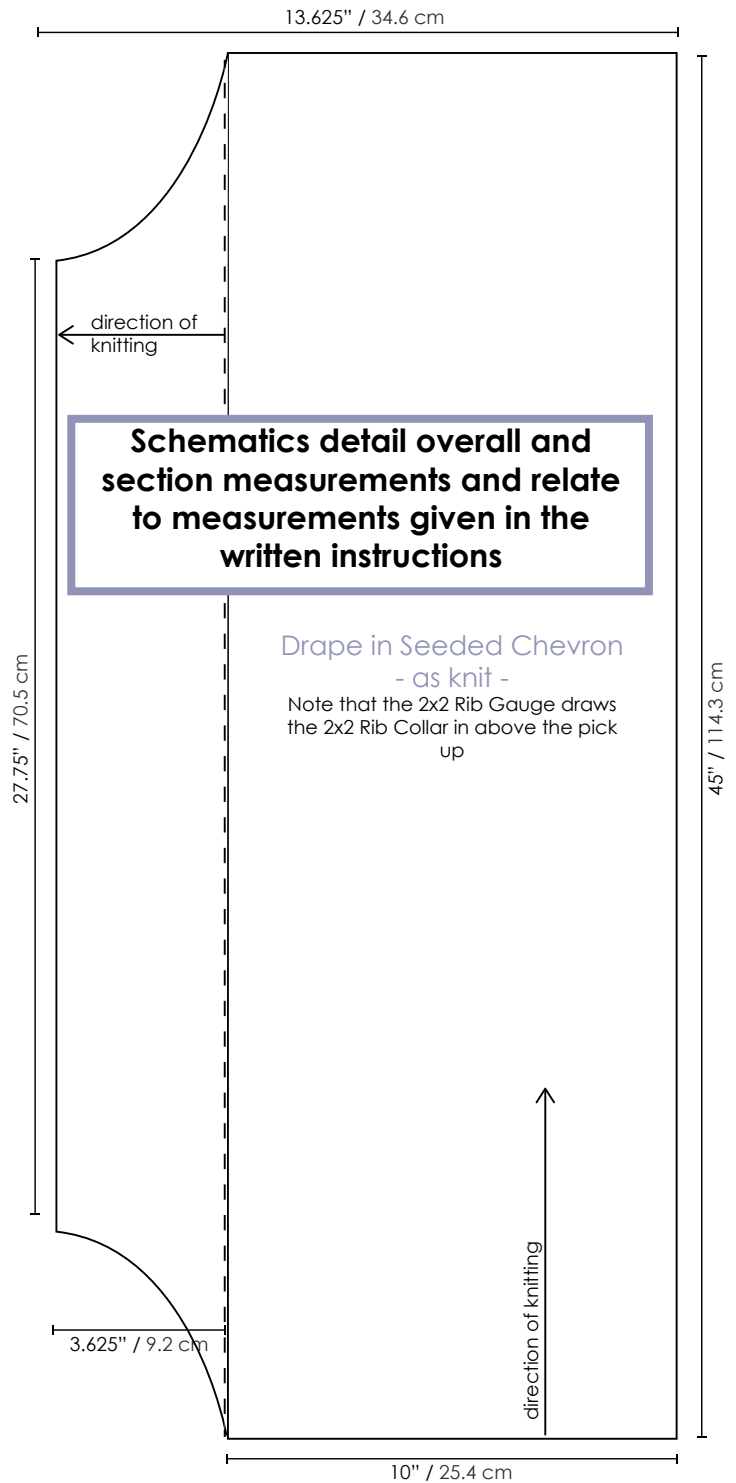
Page numbers

Savoie Shawl road map & schematic

-  bands, knitted on
-  picked up stitches for 2x2 Rib Collar



Road maps show knitting direction and construction details. If there are multiple pieces, there may be multiple road maps



Schematics detail overall and section measurements and relate to measurements given in the written instructions

SAVOIE SHAWL

techniques, in alphabetical order

The technique instructions used in this pattern are provided as an aid in reproducing my designs. My samples are knit by a knitter, following these instructions, so I know they work.

When you encounter a new-to-you technique, I recommend practicing it using practice yarn before working it in the design. Some of my techniques seem a little tricky or fiddly, but they get great results, and will pay off for you when you can apply them to future projects.

e-wrap or backwards cast on

With yarn tail and needle in right hand, pick up yarn in left hand, keeping your left thumb free. *1) Bring thumb behind, then underneath yarn and bring the right needle towards you to create a closed loop on your thumb. 2) Put the right needle into the loop on thumb from underneath, taking your thumb out of the loop and gently tightening the loop onto the needle. Repeat from *1) for the correct number of stitches.

Bring needle to the right and come up from underneath into the middle of the mirrored stitch on the Bottom piece.

Repeat: Take the needle over to the Top piece. *Go down into middle of the first stitch sitting just under the bound off stitches and up into the adjacent stitch. Go across to the Bottom piece and go down into the first stitch and up into the adjacent stitch. Repeat from * across the bound off stitches, ending when all stitches are grafted. *Work in ends*

flexible long-tail cast on

The top needle is the needle you will begin with and the lower is another needle of a specified size. You can use yarn from both or from two balls. [Video of flexible long-tail](#)

Techniques are presented in alphabetical order. These are modified as needed to match how the technique is used in each pattern

...to needle. Hold with cast on loops

Put a slip knot made from the yarn that will go on the forefinger on the top needle. Pick up the lower needle and hold it below the top needle with the slip knot between them. *Hold both yarn ends as for a long-tail cast on in left hand. Go up into thumb loop with both needles (it works nicely to hold the lower needle back about 0.5" from top needle tip). Twist needles over and scoop the forefinger yarn with the top needle only, bringing both needles back through the thumb loop. Don't take thumb out yet! Straighten needles and put thumb loop onto the lower needle. Remove thumb from loop and gently tighten to lower needle. Repeat from * until the correct number of stitches are on the top needle (lower needle will have 1 less stitch). Remove lower needle unless otherwise directed.

...Tapestry Needle, bring the needle up into middle of a loop Needle 2 and *take the Tapestry Needle across to Needle 1, going down into the middle of the stitch. Bring the Tapestry Needle up into the center of the adjoining stitch on Needle 1, across to Needle 2 going down into the loop and bringing the Tapestry Needle up into the center of the adjoining loop on Needle 2; repeat from * until all stitches and loops are grafted together. *Work in ends.*

Gtog

The two legs created by pulling when working the p1-GSR are worked as a p2tog to stay in pattern.

JSSBO (Jeny's Surprisingly Stretchy Bind Off)

Yarn over (see below direction of yarn over) before the first stitch of round. Work the stitch in pattern, and then pull the yarn over over the stitch and off the right needle. *Yarn over and work the next stitch in pattern, pull the first stitch and the yarn over over the last stitch worked and off the right needle. Repeat from * until there is one stitch remaining on the right needle. To close the gap, before cutting the yarn, pull up a new stitch going underneath the two legs of the first stitch. Cut yarn. Pull the first stitch over the new stitch then pull yarn through.

graft live stitches to bind off

Setup: Thread tapestry needle with yarn tail. Orient the bound off stitches so the tops of the stitches on each are directed toward each other; the Top piece will be the one with the stitches facing down toward the bind off and the Bottom piece will be the one with the stitches facing upward. Come up from underneath into the middle of the stitch adjacent to first bound off stitch on Top piece.

techniques, continued, in alphabetical order

If needed, techniques are continued here. These written techniques are linked to the written instruction for ease of use.

other techniques

These techniques link to relevant pages at www.JillWolcottKnits.com/techniques. Click on each technique below to read the explanation.

[Action charts](#)
[wet block](#)
[work in ends](#)

If a technique is used, but not spelled out within the pattern a link is provided for ease of finding a description.

abbreviations & symbols

Want to know more about these abbreviations & symbols? Get more at www.JillWolcottKnits.com/abbreviations. Click on the linked terms [there](#) for more detail.

*	begin repeat from
[]	brackets
"/in	inch(es)
()	paren(these)s
BO	bind off
cm	centimeter
CO	cast on
dpn(s)	double-pointed needles
g	gram(s)
GSR	German short row(s)
Gtog	German short row knit or purl together
JSSBO	Jeny's Surprisingly Stretchy bind off
k	knit
k2tog-b	knit 2 together through the back legs
m	meter
mm	millimeter
p	purl
p1-GSR	p1 and work German short row
PM	place marker
PU	pick up
RS	right side
sl	slip
st(s)	stitch(es)
WS	wrong side
yd(s)	yard(s)

Each pattern has a list of abbreviations and symbols used in that pattern. Some of my abbreviations are capitalized for easier reading within the written instructions.

Savoie Shawl written stitch pattern & Action charts & key

These are the primary stitch patterns used in Savoie Shawl and are presented here for ease of swatch knitting and reference.

Seeded Chevron

multiple of 22 sts + 1

Row 1 (RS): *K1, p3, (k1, p1) 2 times, k1, p5, (k1, p1)

2 times,

Row 2:

p2; rep

Row 3:

from *

Row 4:

repeat f

Row 5:

repeat f

Row 6: K1, *k2, p3, k3, (p1, k1) 2 times, p1, k3, p3,

k3; repeat from *

Row 7: *K1, p3, k3, p3, k1, p1, k1, p3, k3, p3; repeat

from *, end k1

Row 8: K1, *(p1, k3, p3, k3) 2 times, p1, k1; repeat

from *

Row 9: *K1, p1, k1, p3, k3, p5, k3, p3, k1, p1; repeat from *, end k1

Row 10: K1, *p1, k1, p1, (k3, p3) 2 times, k3, (p1, k1) 2 times; repeat from *

mes, k1, p3, k3, p1, k3, p3, (k1,

m *, end k1

2 times, p1, k3, p5, k3, (p1, k1)

2 times, k1, p3, k3, p3, (k1, p1)

end p1

k1) 2 times, (p1, k3) 2 times,

14.

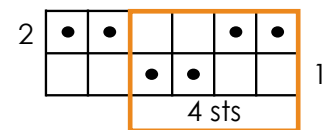
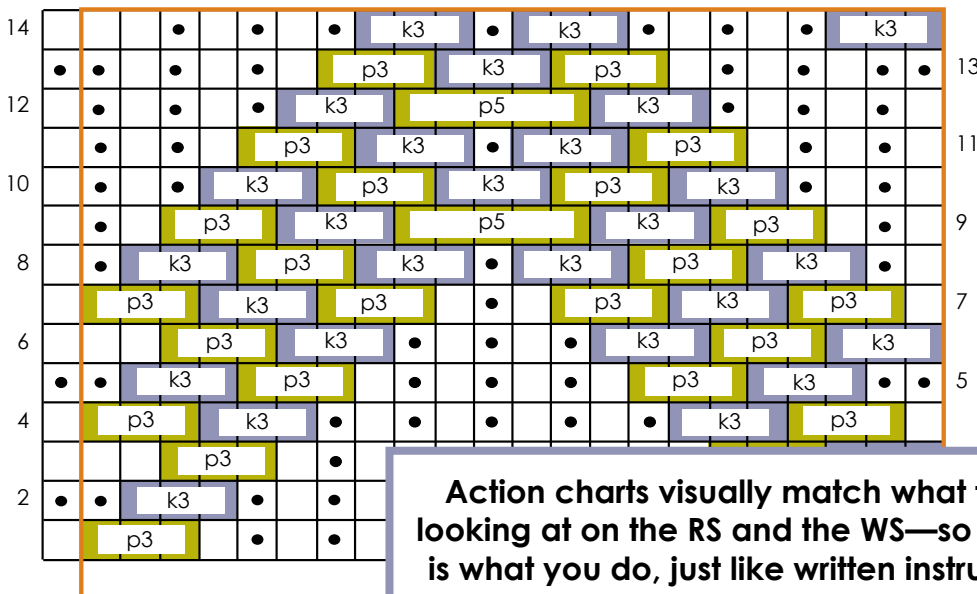
Each stitch pattern is provided in written format and as an Action chart. Written instructions precisely match the charts.

Within the pattern instructions additional charts specific to the instructions are also given.

Seeded Chevron and 2x2 Rib appearance charts & key are on [page 7](#)

The appearance chart shows what the stitch pattern looks like on the RS of the fabric.

Seeded Chevron and 2x2 Rib Action charts & key



□ knit (specified number)
• purl (specified number)

Action charts visually match what the knitter is looking at on the RS and the WS—so what you see is what you do, just like written instructions. Keys are provided on every page with charts to make it easy to follow. Groupings of more than 3 of the same stitch are color coded and grouped for ease of knitting and reading.

2x2 Rib

multiple of 4 sts + 2

Row 1 (RS): *K2, p2; repeat from

Row 2: P2, *k2, p2; repeat from *

Repeat Rows 1 through 2.

Savoie Shawl written stitch pattern & appearance charts & key

These charts show the fabric as it appears on the right side only. The Action charts that I use on page 6 show the actual action (which stitch to make) to take on each row. The key tells you what to do on WS rows of the appearance charts below.

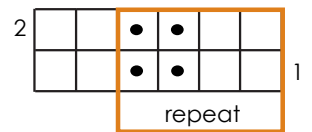
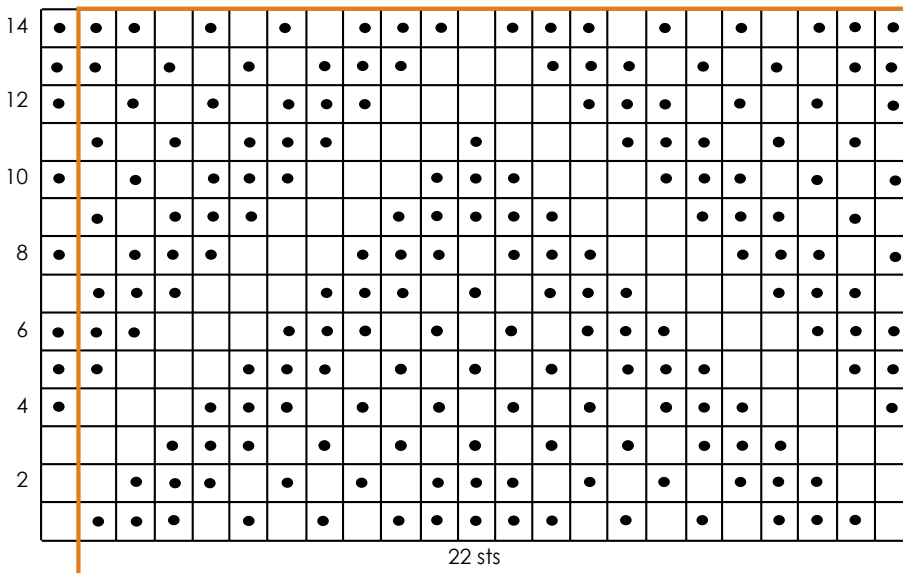
Seeded Chevron
multiple of 22 sts + 1

Row 1 (RS): *K1, p3, (k1, p1) 2 times, k1, p3; repeat from *, end k1
 Row 2: P1, *[p1, k3, (p1, k1) 2 times, p2; repeat from *
 Row 3: *K3, p3, (k1, p1) 5 times, p1, k1; repeat from *, end k1
 Row 4: K1, *p3, k3, (p1, k1) 4 times, p1, k3, p3, k1; repeat from *
 Row 5: *P2, k3, p3, (k1, p1) 3 times, k1, p3, k3, p1; repeat from *, end p1
 Row 6: K1, *k2, p3, k3, (p1, k1) 2 times, p1, k3, p3, k3; repeat from *
 Row 7: *K1, p3, k3, p3, k1, p1, k1, p3, k3, p3; repeat from *, end k1

Row 8: K1, *(p1, k3, p3, k3) 2 times, p1, k1; repeat from *
 Row 9: *K1, p1, k1, p3, k3, p5, k3, p3, k1, p1; repeat from *
 Row 10: K1, *(p1, k1) 2 times, p1, k3, p3, k1, p1; repeat from *
 Row 11: *P2, (k1, p1) 2 times, k1, p3, k3, p3, (k1, p1) 3 times; repeat from *, end p1
 Row 12: K1, *(p1, k1) 2 times, p1, k3, p5, k3, (p1, k1) 3 times; repeat from *
 Row 13: *P2, (k1, p1) 2 times, k1, p3, k3, p3, (k1, p1) 3 times; repeat from *, end p1
 Row 14: K1, *k2, (p1, k1) 2 times, (p1, k3) 2 times, (p1, k1) 2 times, p1, k3; repeat from *
 Repeat Rows 1 through 14.

I will provide appearance charts for visual clarity when appropriate. The key gives guidance on how to work the stitches.

Seeded Chevron and 2x2 Rib appearance charts and key



- knit on RS, purl on WS
- purl on RS, knit on WS

2x2 Rib
multiple of 4 sts + 2

Row 1 (RS): *K2, p2; repeat from *, end k2
 Row 2: P2, *k2, p2; repeat from *
 Repeat Rows 1 through 2.

Seeded Chevron Action charts & key are on [page 6](#)

I originally designed this to be a gauge swatch, but there is nothing wrong with it as a stand-alone project! I am constantly amazed at how many different ways you can yield a very different fabric by working directionally, not only by working a narrower piece.

I loved putting the edging on and if you can, knit backwards you work something like

This introduction to the written pattern gives information and background. In this particular pattern, I was expecting that knitters not accustomed to my pattern format would be using it, so I also provide a list of the techniques provided within the pattern here.

needles they work multi-pleasure of

make it quicker, difficult, until

To get the full effect of the fabrics, you need to wet block, so either do a gauge swatch which you can wet block, or be surprised by the final result at the end.

techniques found on pages 4 and 5

A written description of these techniques is found within this pattern on pages 4 and 5.

e-wrap or backwards cast on
flexible long-tail cast on
graft live stitches to bind off
graft live stitches to e-wrap cast on
Gtog

JSSBO (Jeny's Surprisingly Stretchy Bind Off)
p1-GSR / German short row
knitting backwards
pick up stitches

Each section title appears in Orange/all caps. This is often followed by a bit of italicized guidance for working that section of the instructions.

Information may be given in tables to make it easier to read and follow. In this pattern there is only one size, but multiple sized patterns have the instructions stacked for each row of the written instruction.

This layout is designed to make it easy to follow and digest instructions.

SEEDED CHEVRON DRAPE

The Drape is worked in the Seeded Chevron plus border stitches. The beginning border stitches form the bottom border and the ending border stitch will be where stitches are picked up for the Collar.

Using US size 8[5mm] needles and the [flexible long-tail cast on](#), CO48 sts as follows: CO1, PM, CO44, PM, CO3.

Row	Border	Seeded Chevron (22 sts)	Repeat	Border
1 [RS]	K3	k1, p3, (k1, p1) 2x, k1, p5, (k1, p1) 2x, k1, p3	2x	k1
2	P1	[p1, k3, (p1, k1) 2x] 2 x, p1, k3, p2	2x	p3
3	K3	k3, p3, (k1, p1) 5x, k1, p3, k2	2x	k1

SAVOIE SHAWL

Row	Border	Seeded Chevron (22 sts)	Repeat	Border
4	P1	p3, k3, (p1, k1) 4x, p1, k3, p3, k1	2x	p3
5	K3	p2, k3, p3, (k1, p1) 3x, k1, p3, k3, p1	2x	k1
6	P1	k2, p3, k3, (p1, k1) 2x, p1, k3, p3, k3	2x	p3
7	K3	k1, p3, k3, p3, k1, p1, k1, p3, k3, p3	2x	k1
8	P1	(p1, k3, p3, k3) 2x, p1, k1	2x	p3
9	K3	k1, p1, k1, p3, k3, p5, k3, p3, k1, p1	2x	k1
10	P1	p1, k1, p1, (k3, p3) 2x, k3, (p1, k1) 2x	2x	p3
11	K3	(k1, p1) 2x, k1, p3, k3, p1, k3, p3, (k1, p1) 2x	2x	k1
12	P1	(p1, k1) 2x, p1, k3, p5, k3, (p1, k1) 3x	2x	p3
13	K3	p2, (k1, p1) 2x, k1, p3, k3, p3, (k1, p1) 3 x	2x	k1
14	P1	k2, (p1, k1) 2x, (p1, k3) 2x, (p1, k1) 2x, p1, k3	2x	p3

Ur atum, erum qui corum essum harchil exped explaborit, inveliberum re volesequibus quiant et inciae connihitia eos et harchitas dolorro mos provita turepe laut lam enditatem que vel ipsantem at que volorumqui conseruptat.

2x2 RIB COLLAR

Tur atum, erum qui corum essum harchil exped explaborit, inveliberum re volesequibus quiant et inciae connihitia eos et harchitas dolorro mos provita turepe laut lam enditatem que vel ipsantem at que volorumqui conseruptat.

Ta nobis aut dolesequo officio voluptatur sin prior rovideles delesti nulles que volorum eture expliqu idissum sus ab ipsunt aut voluptatum qui doluptatio blam dolupienda conest, odis comni istiaeritis re exceperis moluptatque nobit, qui sequia vollorr uptate lat de dis el incto tem rem eum rem qui nobist ad et volores tiaepeditas a nosam reptibe rchicabore necera voluptam que inciendi untemporem eos eatur?

RIGHT FRONT BAND

You will be rewarded for the slight fussiness of working this with a lovely front edge. If using knitting backwards, do not turn, work all rows from the RS. This is the

perfect time to use knitting backward. You will find a [video here](#).

Ur atum, erum qui corum essum harchil exped explaborit, inveliberum re volesequibus quiant et inciae connihitia eos et harchitas dolorro mos provita turepe laut lam enditatem que vel ipsantem at que volorumqui conseruptat.

Miter Right Front Corner

Some sections of instructions are presented as row-by-row instructions. Notice how there is a link to a video for a technique mentioned.

The written instructions are presented with each row instruction as a separate paragraph. Where a specific technique is used there may also be information related to that technique in the written instructions.

PU Row 1 [RS]: Using US size 3[3.25mm] needles and working along the cast on edge of the Drape, PU3 sts

in cast on stitches from 2x2 Rib Collar, then PU1 in cast on edge. 4 sts

Row 2: SI PU1, p3. 4 sts

Row 3:

Work Row of the Drape

Miter Le

Each GS

and RS r

p1-GSR,

ends with

GSR Row

GSR Row

GSR Row

Cut yarn, leaving sufficient yarn to graft 3 stitches.

Graft live stitches over the cast on of the bottom 3 knit stitches of Drape.

This piece has trim for which the instructions are presented before the finishing. When the knitter arrives at the finishing the instructions will be very specific for each step needed in the finishing. This piece is mostly finished before actually arriving at the Finishing section.

I've ended the pattern with some hints for working this as a larger piece, but the goal of this pattern was to keep it a one-skein project.

Detail and project photos are used when there is space in the pattern. These photos are always available online.

FINISHING

Work in ends.

Wet block to match Schematic.

Steam block.

LARGER SHAWL

After you've made your kit Shawl, this pattern can be made larger using a larger quantity of yarn. I can only give examples based on the gauge information given here, so you may need to adjust this to accommodate your gauge. Always be careful to save enough yarn to bind off the Collar and to work the Front Bands.

For each 14-row pattern repeat added to the length of the Drape, you need to pick up 20 additional stitches for the 2x2 Rib Collar. Each 14-row pattern repeat will add approximately 2.375" / 6 cm in length.

Create a deeper Drape by adding 22 stitches for an additional pattern repeat. Each 22 stitches will add approximately 4.875" / 12.4 cm in depth.

A deeper 2x2 additional row

Posting photos on Instagram and Ravelry is helpful to other knitters, and gives you, the knitter, a final sense of accomplishment.

PROJECT PHOTOS

Post your project photos on [Instagram](#) using #JWKsavoieshawl

Update your project page on [Ravelry](#) or create one now!



SAVOIE SHAWL