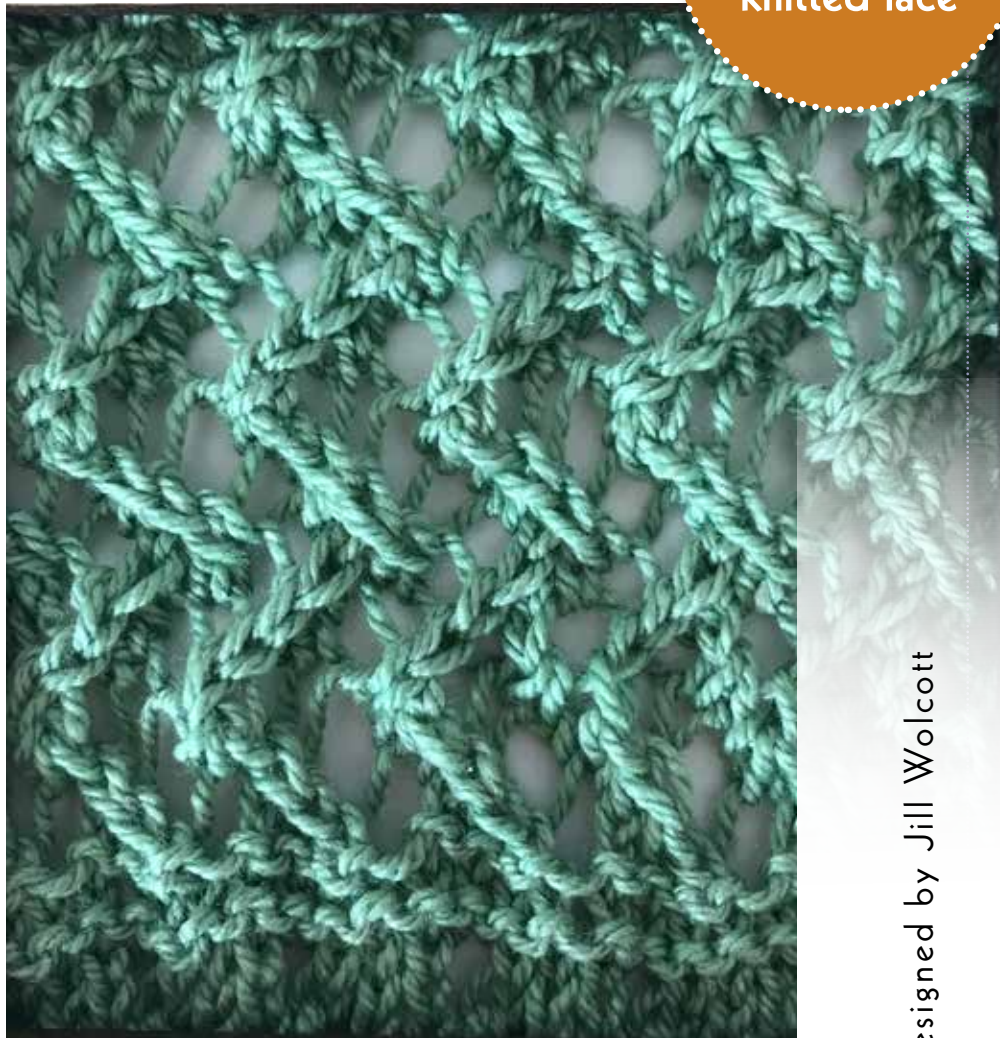


This is such a pretty lace pattern. Did you know that knitted lace has lace patterning every row or round, while lace knitting has lace patterning every other row or round. This is knitted lace.

It was a bit of a challenge to figure out the proper charting for this lace because it is a repetition of 4 stitches — except for row 4, which needs 8 stitches to work. Trust me, I tried every other way!

I knitted this swatch in [Elemental Affect Civility Sport](#). I have not blocked it yet, and I know it will flatten out with blocking. The sheen from the silk is lovely for catching light and the movement of the stitches. It would make a lovely cardigan or wrap.



p2tog-b

With yarn in front and the right needle behind the left needle, twist the right needle so it can go into 2 sts together from left to right. Bring the right needle to usual purl position in front of the left needle and complete a p2tog.

SSP

Alternatively, after going into the 2 sts as above, slip them to the right needle, insert the left needle into the back of those 2 sts and work a p2tog.

Share your projects using the hashtags #JillWolcottKnits and #JWKLace59 - I love seeing what you're working on. And be sure to sign up for the JWK Newsletter to stay in the loop about new patterns, classes, workshops, and more.

Sign up at: www.jillwolcottknits.com/subscribe

Designed by Jill Wolcott

LACE 59

Lace 59, page 43
multiple of 8 sts

Row	Lace 59
1 [RS]	(YO, SSK, k2) 2x
2	(p1, p2tog-b / SSP, YO, p1) 2x
3	(k2, YO, SSK)
4	p1, YO, p2, p2tog-b/SSP, YO, p1, p2tog-b/SSP
5	(YO, k2, k2tog) 2x
6	(YO, p2tog, p2) 2x
7	(k1, k2tog, YO, k1) 2x
8	(p2, YO, p2tog) 2x

Repeat Rows 1 through 8.

Lace 59, page 43
multiple of 8 sts

Row 1 [RS]: *(YO, SSK, k2) 2 times; repeat from *
 Row 2: *(P1, p2tog-b / SSP, YO, p1) 2 times; repeat from *
 Row 3: *(K2, YO, SSK) 2 times; repeat from *
 Row 4: *P1, YO, p2, p2tog-b / SSP, YO, p1, p2tog-b / SSP; repeat from *
 Row 5: *(YO, k2, k2tog) 2 times; repeat from *
 Row 6: *(YO, p2tog, p2) 2 times; repeat from *
 Row 7: *(K1, k2tog, YO, k1) 2 times; repeat from *
 Row 8: *(P2, YO, p2tog) 2 times; repeat from *
 Repeat Rows 1 through 8.

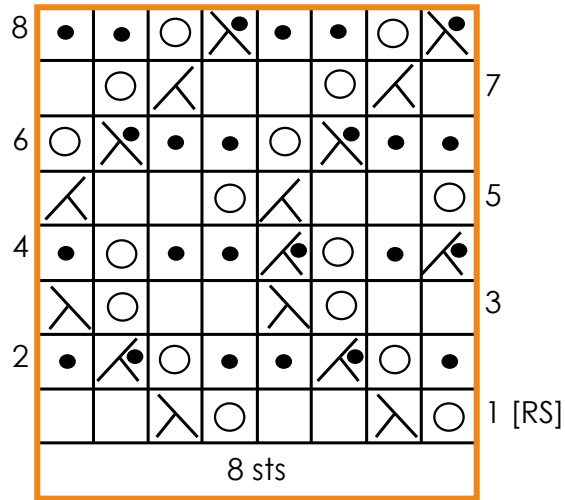
[Link to Survey!](#)

I'm always curious about what appeals to knitters. Take this brief survey (takes 1 minute) and I'll draw names and give away a copy of the Positano Cowl (not yet released) to a lucky winner for every 25 survey takers!

Drawing on Monday, September 15 at 9 am PDT.

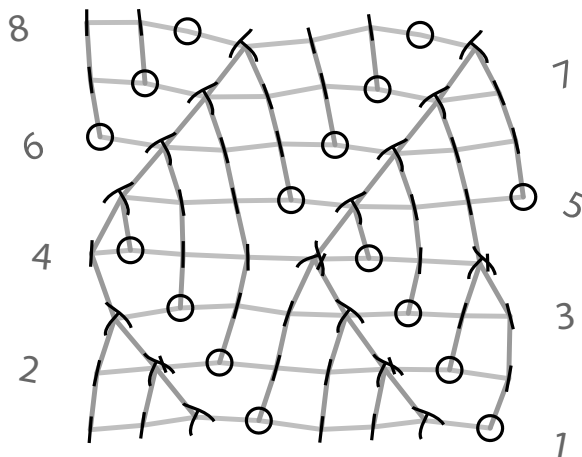
Lace 59 [Action chart & key.](#)

□	knit	↘	SSK
○	YO	↙	k2tog
⊗	p2tog	↘	p2tog-b

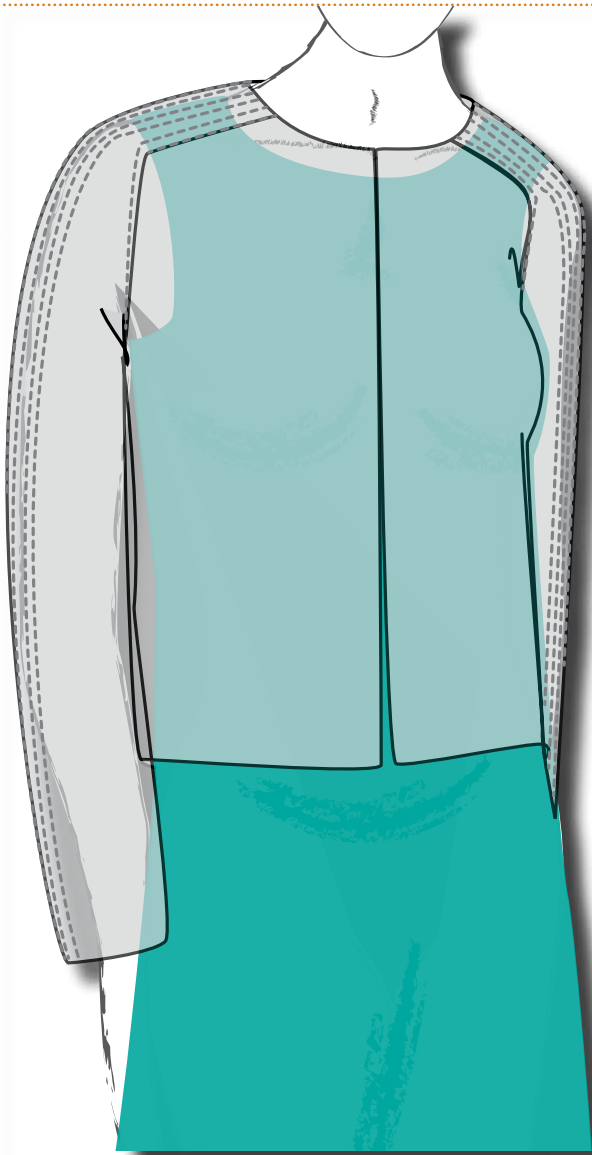


Lace 59, Appearance chart & key created on [Stitch-Maps.com](#).

- ⊔ Knit on RS, purl on WS
- Yo on RS and on WS
- ↙ K2tog on RS, p2tog on WS
- ↘ Ssk
- ↘ K2tog tbl on RS, p2tog tbl on WS



©stitch-maps.com



Lace cardigan done in JSK 59, with 2x2 rib at the sides, but otherwise no body shaping. The saddle-shoulder sleeve has a rib from the neck to the cuff, and very shallow raglan shaping from the underarm to the saddle line. Length is at high hip. There is a relaxed crew neckline, and no front closures. There will be narrow trim on all open edges.

Lace pullover done in JSK 59, with 2x2 rib at the sides, but otherwise no body shaping. The other elements are the same as the cardigan. Length is as desired, but shown at mid-hip.



LACE 59 SKETCHES

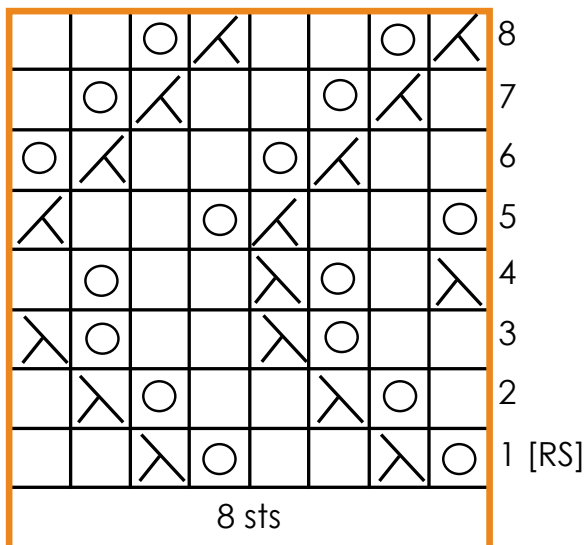
Lace 59, page 43 (ITR)
multiple of 8 sts

Rnd	Lace 59
1 [RS]	(YO, SSK, k2) 2x
2	(k1, YO, SSK, k1) 2x
3	(k2, YO, SSK) 2x
4	SSK, k1, YO, SSK, k2, YO, k1
5	(YO, k2, k2tog) 2x
6	(k2, k2tog, YO) 2x
7	(k1, k2tog, YO, k1) 2x
8	(k2tog, YO, k2) 2x

Repeat Rnds 1 through 8.

Lace 59 (ITR) Action & Appearance chart & key.

- knit
- YO
- ↘ SSK
- ↙ k2tog

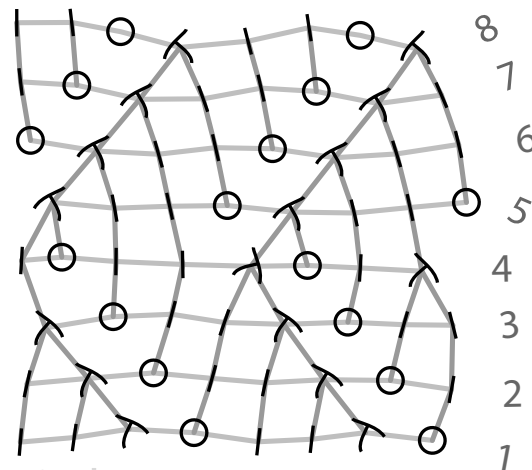


Lace 59, page 43 (ITR)
multiple of 8 sts

Rnd 1 [RS]: *(YO, SSK, k2) 2 times; repeat from *
 Rnd 2: *(K1, YO, SSK, k1) 2 times; repeat from *
 Rnd 3: *(K2, YO, SSK) 2 times; repeat from *
 Rnd 4: *SSK, k1, YO, SSK, k2, YO, k1; repeat from *
 Rnd 5: *(YO, k2, k2tog) 2 times; repeat from *
 Rnd 6: *(K2, k2tog, YO) 2 times; repeat from *
 Rnd 7: *(K1, k2tog, YO, k1) 2 times; repeat from *
 Rnd 8: *(K2tog, YO, k2) 2 times; repeat from *
 Repeat Rnds 1 through 8.

Lace 59, Appearance chart & key created on [Stitch-Maps.com](https://www.stitch-maps.com).

- ┆ Knit
- Yo
- ↘ K2tog
- ↙ Ssk



©stitch-maps.com

Tip for ITR switch

If you don't want to cast on enough stitches to do a piece using the magic loop or dpns, use circular needles and at the end of EVERY row, push the stitches back to the right end of the needle, drape the yarn across the back, and knit the next row from the RS. This mimics knitting ITR. You will not use any more yarn than if you did an ITR switch.

[Link to ITR Survey!](#)

more on [next page](#) . . .

yarn requirement lace cardigan or pullover KAL

These are actual body measurements. The circumference for the pattern will add in ease. This is not written in stone yet, so if you think you might need more (either for length or ease), buy extra! I'll do a cowl or shawl pattern to use up the rest.

Bust	32"	34"	36"	38"	40"	42"	44"	46"	48"	50"
	81.3 cm	86.4 cm	91.4 cm	96.5 cm	101.6 cm	106.7 cm	111.8 cm	116.8 cm	121.9 cm	127 cm
Yds	900	956	1012	1068	1124	1180	1236	1292	1348	1404
m	823	874	925	977	1028	1079	1130	1181	1233	1284
skeins	2	2	2	2	2	2	2	2	2	2

Bust	52"	54"	56"	58"	60"	62"	64"	66"	68"	70"
	132.1 cm	137.2 cm	142.2 cm	147.35 cm	152.4 cm	157.5cm	162.6 cm	167.6 cm	172.7 cm	177.8 cm
Yds	1452	1543	1634	1725	1816	1907	1998	2089	2180	2271
m	1328	1411	1494	1577	1661	1744	1827	1910	1993	2077
skeins	2	2	2	3	3	3	3	3	3	3

[Link to ITR Survey!](#)

Although it asks the same questions, this is a different survey, which will allow you to participate a second time.

I'm always curious about what appeals to knitters. Take this brief survey (takes 1 minute) and I'll draw names and give away a copy of the Positano Cowl (not yet released) to a lucky winner for every 25 survey takers!

Drawing on Monday, September 15 at 9 am PDT.